



INNOVATIVE GROWERS EQUIPMENT INC.

HYDROFARM COMMERCIAL
DIVISION



GROW RACK MOBILE CART ASSEMBLY INSTRUCTIONS

Complete Instructional
Guide

TOOLS NEEDED FOR ASSEMBLY



½" SOCKET WRENCH
OR ADJUSTABLE
WRENCH

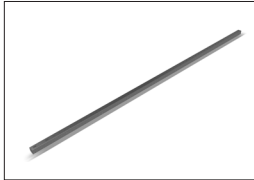


Call 815-991-5010 or email us at support@innovativegrowersequipment.com if you have any questions

INNOVATIVEGROWERSEQUIPMENT.COM

PARTS LIST

CONFIRM ALL PARTS ARE PRESENT BEFORE STARTING INSTALLATION



GROW RACK UPRIGHT
4X



GROW RACK COVER UNIT
1X



GROW RACK SHELF UNIT
*Quantity depends on unit purchased.



GROW RACK BASE UNIT
*Quantity depends on unit purchased.



GROW RACK EBB & FLOW TRAY
*Quantity depends on unit purchased.



TRAY FILTER
*Quantity depends on unit purchased.



TRAY OUTLET CONNECTOR
*Quantity depends on unit purchased.



TRAY SCREEN
*Quantity depends on unit purchased.



1/4" X 1-3/4" ZINC ROUND DOUBLE WIRE SNAPPER PIN
*Quantity depends on unit purchased.



5/16"-18 X 2-1/4" ASTM F593 18-8 STAINLESS STEEL HEX CAP SCREW
4X



5/16" 18-8 STAINLESS STEEL FLAT WASHER (NOM OD)
8X



5/16-18, HEX NYLON INSERT LOCKNUT (NE), GRADE N2, ZINC
4X

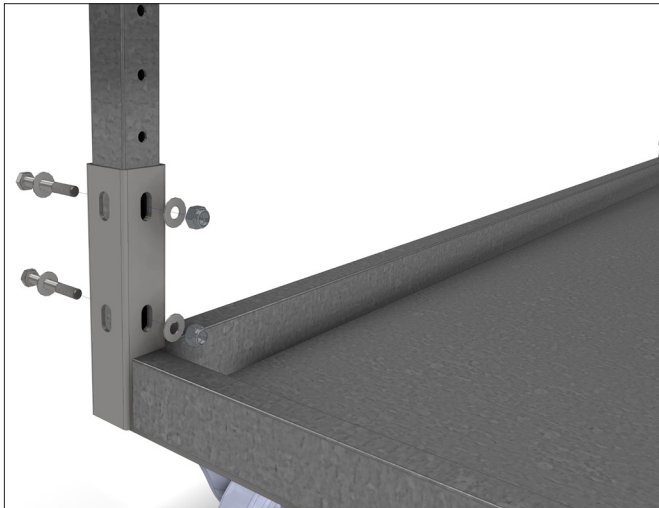
FOLLOW INSTRUCTIONS BELOW

STEP #1

Insert the Grow Rack Uprights into the square tubing located at the corners of the Grow Rack Base Unit.

STEP #2

Utilize the provided hardware to securely fasten the uprights in all four corners.
(figure 1)



STEP #3

Position the Wire Snapper Pin for the first level at your desired height within all four uprights.

STEP #4

With assistance from two individuals, carefully slide the Shelf Unit over all four uprights until it reaches the wire snapper pins.

STEP #5

Place the Ebb & Flow plastic tray into the Shelf Unit, referencing the Filter Fitting Instructions if needed.

STEP #6

Repeat steps 3 through 5 for each tier ordered.

STEP #7

Upon completion, position the Cover Unit atop the Uprights.

Attention:

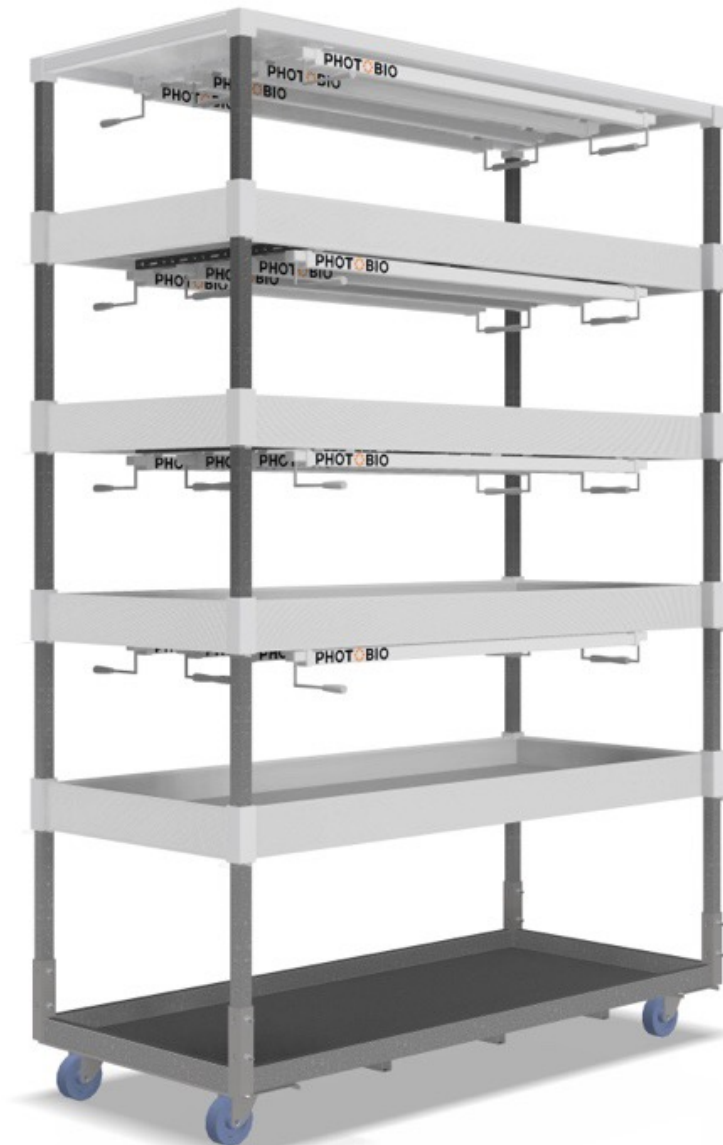
If you have acquired the Irrigation or Lighting Bundle, kindly refer to the instructions provided.



GROW RACK MOBILE CART ASSEMBLY INSTRUCTIONS

FOLLOW INSTRUCTIONS BELOW (CONT.)

CONGRATULATIONS
YOUR GROW RACK MOBILE CART IS COMPLETE!



Call 815-991-5010 or email us at support@innovativegrowersequipment.com if you have any questions

INNOVATIVEGROWERSEQUIPMENT.COM





IRRIGATION BUNDLE ASSEMBLY INSTRUCTIONS




PEOPLE NEEDED

-  ONE PERSON

TOOLS NEEDED FOR ASSEMBLY

-  A CUTTING TOOL, SUCH AS A KNIFE, TO SLICE THROUGH THE BLACK IRRIGATION HOSE
-  SCREWDRIVER

PARTS LIST

-  **45 GALLON IRRIGATION TANK**
Plumbing is already installed and is inside the tank.
-  **BLACK IRRIGATION HOSE**
-  **HOSE CLAMPS**

STEP #1

Position the tank onto the Base Unit, ensuring that the side of the tank containing the ball valves aligns with the irrigation fittings on the trays.

STEP #2

Adjust the length of the black hose according to the height at which the tiers were positioned.

STEP #3

Utilize the supplied hose clamps to fasten the black hose around the barbed fittings on both the tank and the ebb and flow tray fitting.

STEP #4

Repeat step 3 for each tier purchased.

STEP #5

When flooding one of the trays, it is necessary to close the ball valves of the remaining tiers.





LIGHT BUNDLE ASSEMBLY INSTRUCTIONS

PEOPLE NEEDED

 ONE PERSON

TOOLS NEEDED FOR ASSEMBLY

 SCREWDRIVER

PARTS LIST

 PHOTOBIO VP LED, 32W BAR LIGHTS
4X per tier

 AUTOPILOT DIGITAL TIMER
with up to 8 ON/OFF settings

STEP #1

Attach the brackets to the crossbars on the shelf using the included brackets and self-tapping screws found in the Photobio light box. There will be 4 lights per tier.

STEP #2

Refer to Photobio VP instructions for wiring and connection assembly information.

STEP #3

Have a qualified electrician connect all wires together in the junction box and to the facility's main power.

