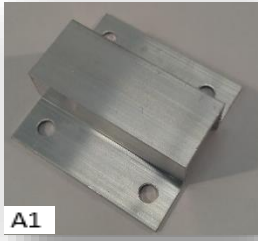




Innovative Growers Equipment, Inc. Plant support system assembly instructions



# Parts List



A1

Square to square clamp



A4

Load bearing plug



A6

1/4 -20 Bolt and Nut



A11

Tek (Self-tapping) Screws



PS1 1 1/4"

Standard plant support crossbar



A14

Clevis pin



PS2 1"



Inner view

Outer view

Side view

PS3

Upright post

1. Take one of the upright posts (**PS3**) and line it up as close to the riveted corner of the aluminum bench. Then use the tek screws (**A11**) and drill through the aluminum. It's recommended to begin connecting the upright posts on all four corners of the bench first then move onto the middle ones. Be sure to line up the upright posts identically to the ones that are positioned on the opposite side of the bench. (see *Figure 1*)

**Please Note:** You will want to space out the upright posts evenly along the bench, they will normally be spaced about 4'6" to 7' between the post (typically the same number of plant support system uprights are used as legs). Generally, you'll want to line them up with the legs but sometimes they do not line up perfectly on larger tables.

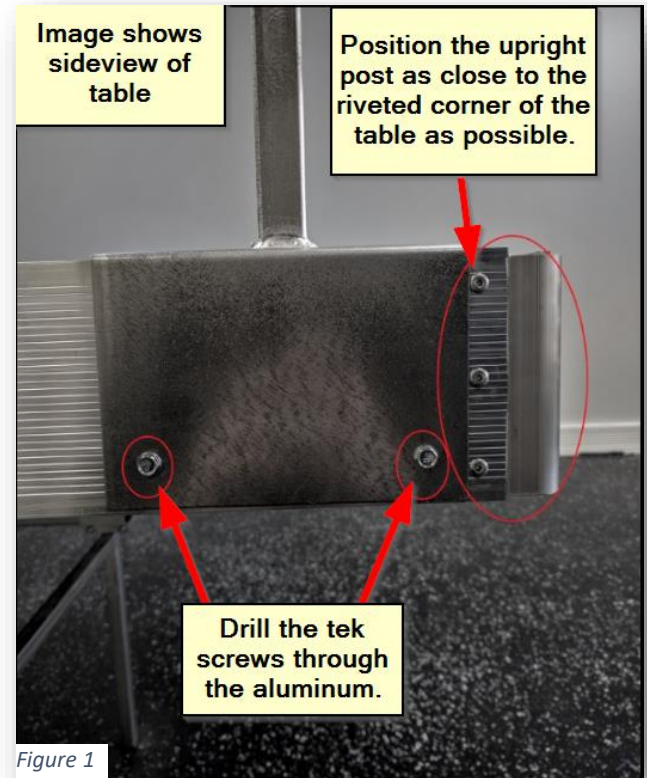


Figure 1

2. Once you have all the upright posts installed, take the clevis pins (**A14**) and insert them into the holes (same level) on all the upright posts (**PS3**). (see *Figure 2*).

It is recommended that you insert the clevis pins in towards the bench in each corner and have them positioned like the picture to the right until you have the plant support crossbar on them

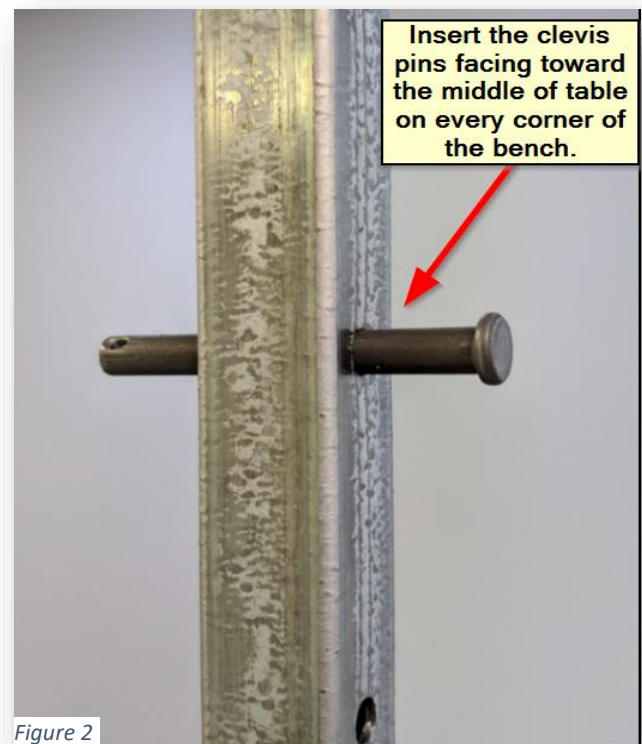


Figure 2



- Next, slide the standard plant support system cross bars (**PS1**) down the opening at the top of the upright posts (**PS3**) and rest them on top of the clevis pins (**A14**) as shown in Figure 4. You should do the same for all the standard plants support system cross bars (**PS1**) as shown in Figure 3.

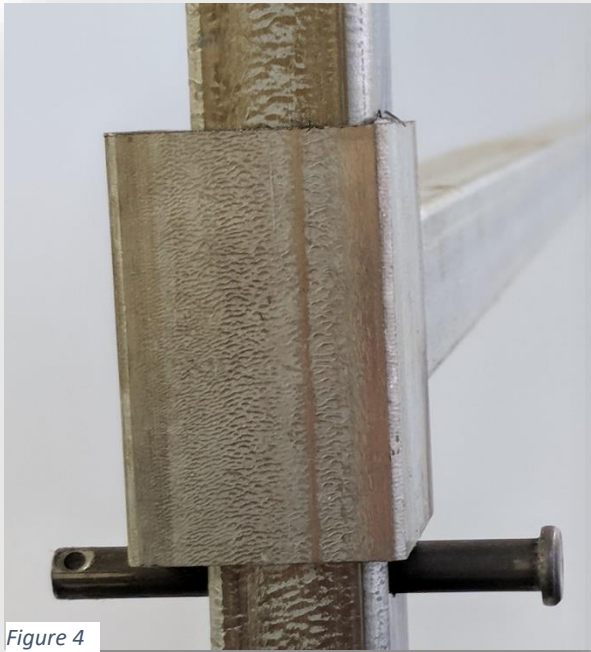
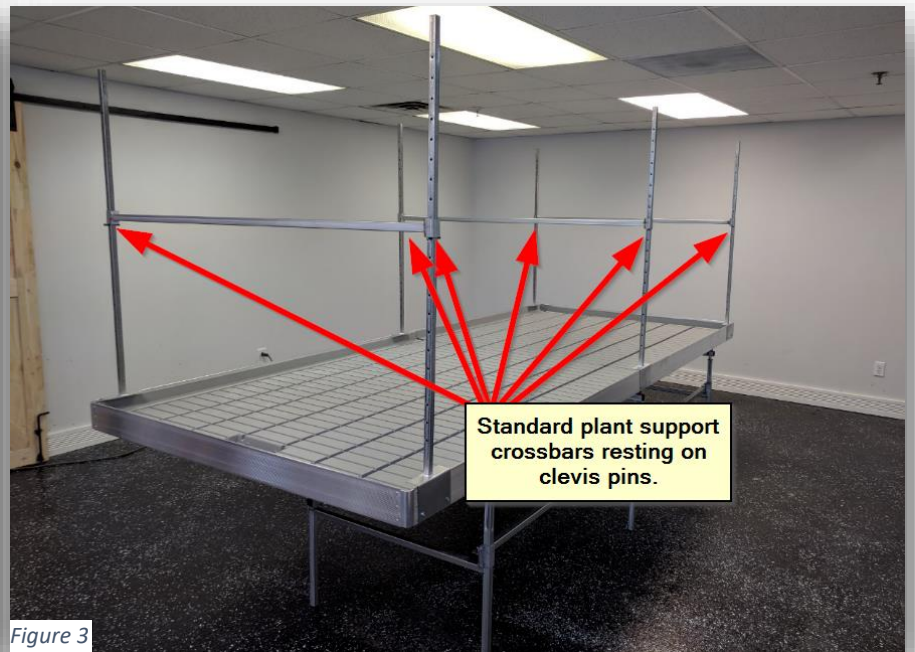


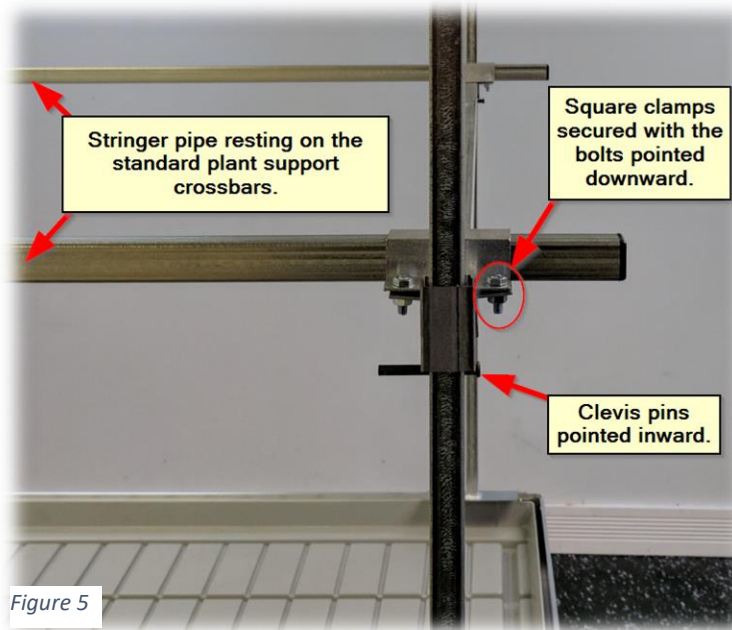
Figure 4



Standard plant support crossbars resting on clevis pins.

Figure 3

- Now take the stringer pipe and lay them along the top of the plant support cross bars (**PS1**). They should be around the same length as the bench itself, not the upright supports. Once they're lined up parallel to the bench, you can use the square to square clamps and the  $\frac{1}{4}$  - 20 bolts and nuts (**A6**). Be sure the bolts are pointing downward as shown on Figure 4.



Stringer pipe resting on the standard plant support crossbars.

Square clamps secured with the bolts pointed downward.

Clevis pins pointed inward.

Figure 5

5. Now you'll want to insert the load bearing plugs (**A4**) into the ends of the stringer pipe as is shows on *Figure 6*.



Load bearing plug

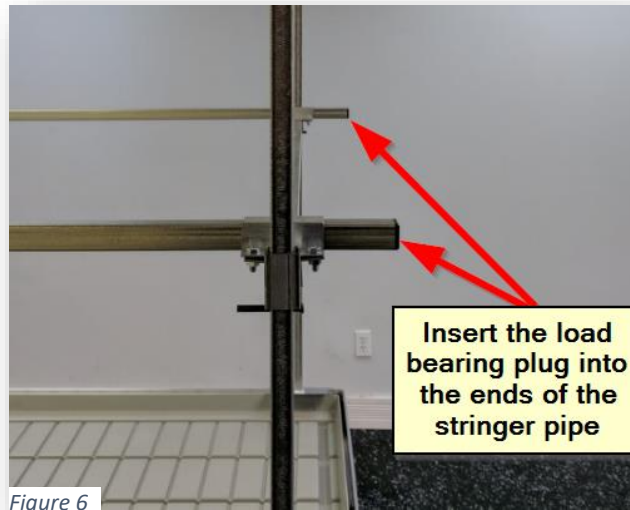


Figure 6

6. Next, take additional clevis pins (**A14**) and insert them at the highest holes of the upright posts. You'll do this on all four corners of the bench as well as on any upright posts located above any maxroll anti tip headers for larger tables. See *Figure 7*.

7. Then take the stabilizer plant support crossbars (**PS2**) and slide them down from the opening of the upright posts (just as you did with the standard ones). See *Figure 8*.

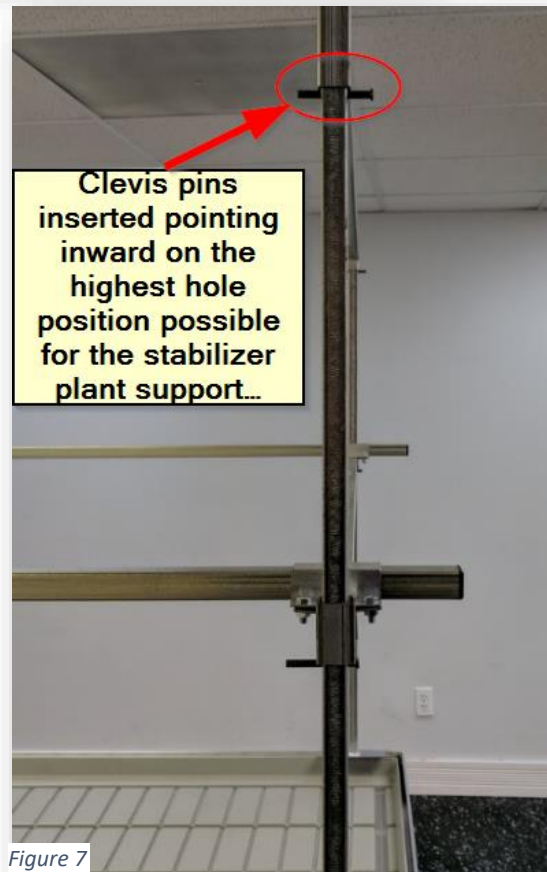


Figure 7

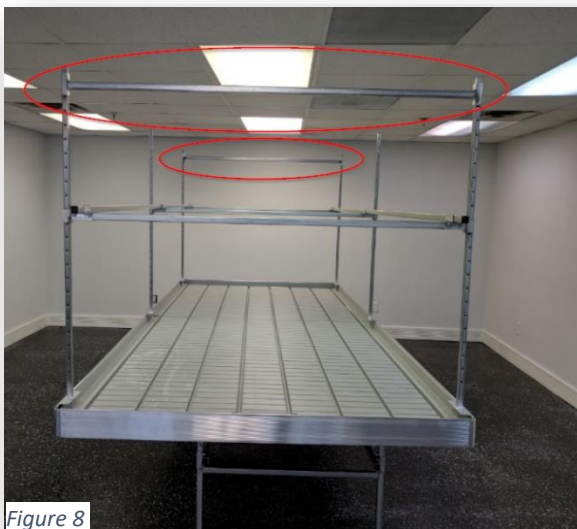


Figure 8

**Congratulations! You've now completed your plant support installation!**